

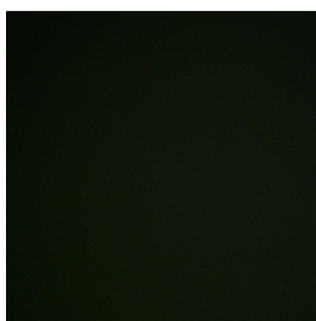
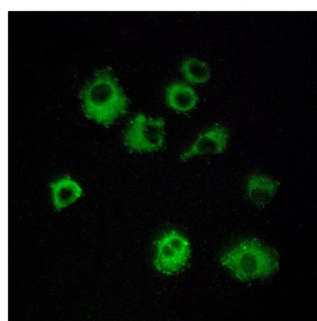


Orexin R-1 Polyclonal Antibody

| | |
|----------------------------------|---|
| Catalog No | YP-Ab-12786 |
| Isotype | IgG |
| Reactivity | Human;Mouse;Rat |
| Applications | IF;ELISA |
| Gene Name | HCRTR1 |
| Protein Name | Orexin receptor type 1 |
| Immunogen | The antiserum was produced against synthesized peptide derived from human HCRTR1. AA range:298-347 |
| Specificity | Orexin R-1 Polyclonal Antibody detects endogenous levels of Orexin R-1 protein. |
| Formulation | Liquid in PBS containing 50% glycerol, 0.5% BSA and 0.02% sodium azide. |
| Source | Polyclonal, Rabbit,IgG |
| Purification | The antibody was affinity-purified from rabbit antiserum by affinity-chromatography using epitope-specific immunogen. |
| Dilution | Immunofluorescence: 1/200 - 1/1000. ELISA: 1/20000. Not yet tested in other applications. |
| Concentration | 1 mg/ml |
| Purity | ≥90% |
| Storage Stability | -20°C/1 year |
| Synonyms | HCRTR1; Orexin receptor type 1; Ox-1-R; Ox1-R; Ox1R; Hypocretin receptor type 1 |
| Observed Band | |
| Cell Pathway | Cell membrane ; Multi-pass membrane protein . |
| Tissue Specificity | Brain, |
| Function | function:Moderately selective excitatory receptor for orexin-A and, with a lower affinity, for orexin-B neuropeptide. Seems to be exclusively coupled to the G(q) subclass of heteromeric G proteins, which activates the phospholipase C mediated signaling cascade.,similarity:Belongs to the G-protein coupled receptor 1 family., |
| Background | The protein encoded by this gene is a G-protein coupled receptor involved in the regulation of feeding behavior. The encoded protein selectively binds the hypothalamic neuropeptide orexin A. A related gene (HCRTR2) encodes a G-protein coupled receptor that binds orexin A and orexin B. [provided by RefSeq, Jan 2009], |
| matters needing attention | Avoid repeated freezing and thawing! |

Usage suggestions

This product can be used in immunological reaction related experiments. For more information, please consult technical personnel.

Products Images

Immunofluorescence analysis of MCF7 cells, using HCRT1 Antibody. The picture on the right is blocked with the synthesized peptide.